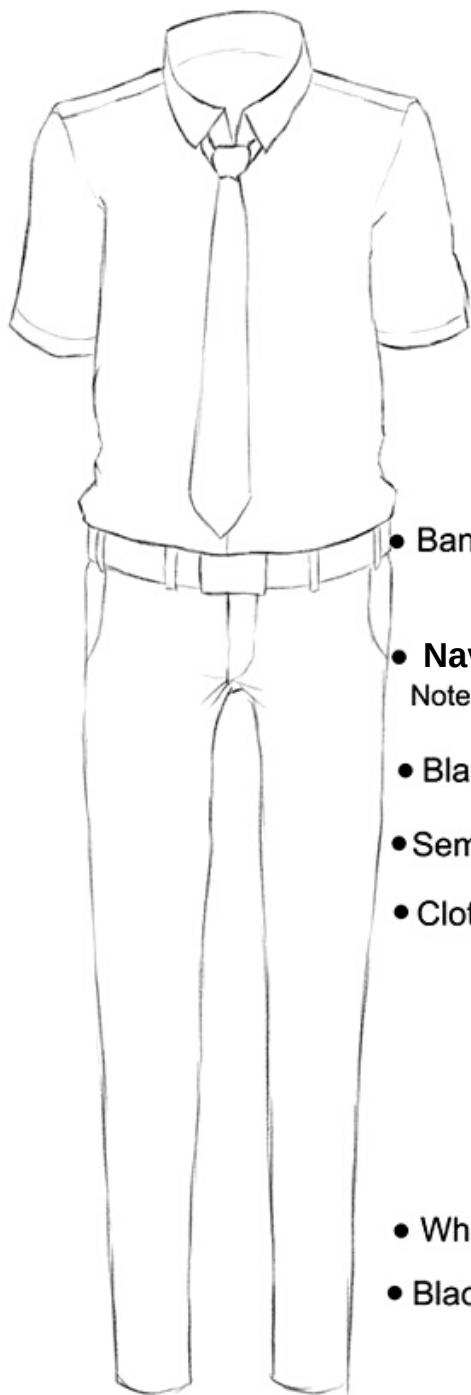


# LCCB SHS Uniform

## Male Students



- White Polo shirt



- Banded sleeves

- Navy blue ready-to-wear necktie  
Note: necktie should not touch the belt

- Black belt

- Semi-slim fit Navy blue slacks

- Cloth: Cotton Lacoste

- White socks

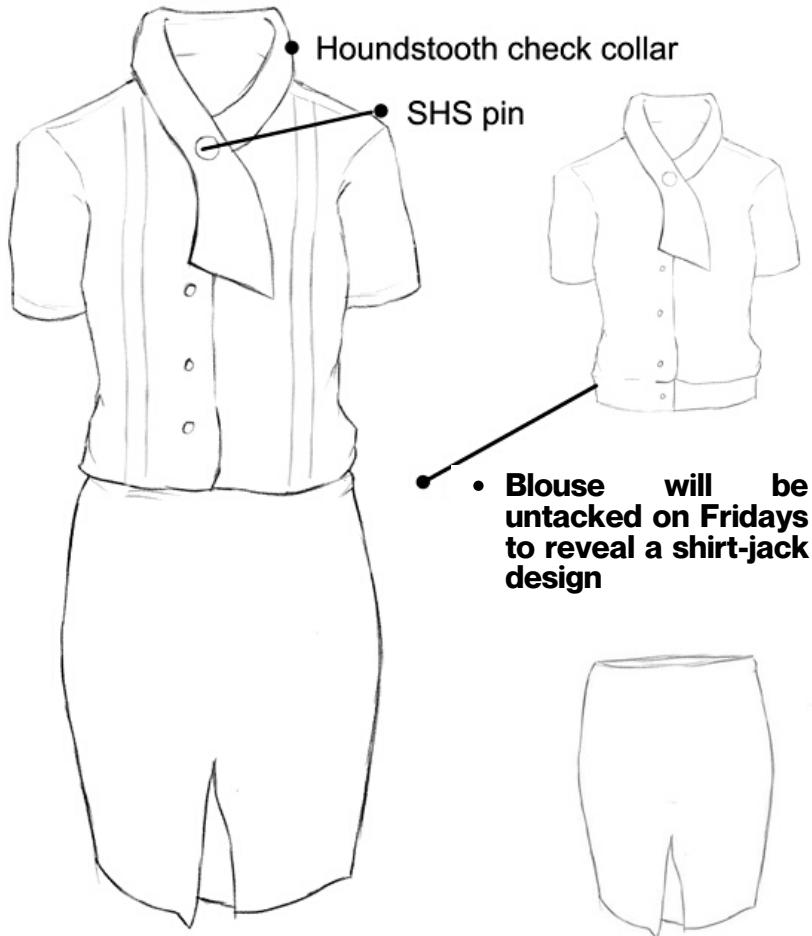
- Black leather shoes



with School ID & LCCB Lanyard

# LCCB SHS Uniform

## Female Students



- **Navy blue pencil skirt with box slit in front**

*Note: Length should not be shorter than 2-inches below the knee*

*Students may also opt to wear pants of the same color and material*

- **Cloth: Soft-smooth linen**
- **1 to 2-inch heels leather, closed-toe, black shoes**

**with School ID & LCCB Lanyard**